



Gowerton School

Ysgol Tregŵyr

Year 9 Options

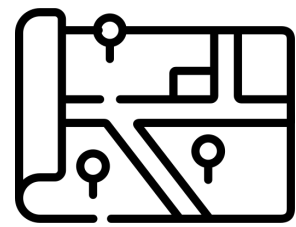
Supporting your future choices



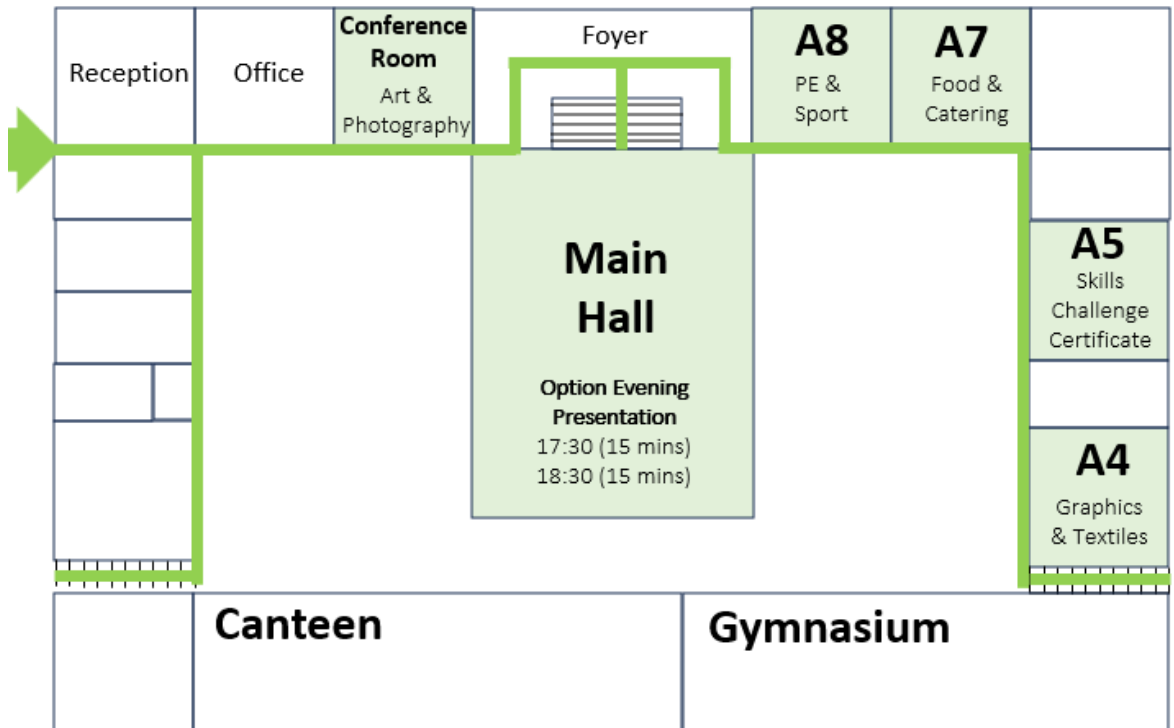
Mi Ddylwn, Mi Allaf, Mi Fynnaf - I Should, I Can, I Shall



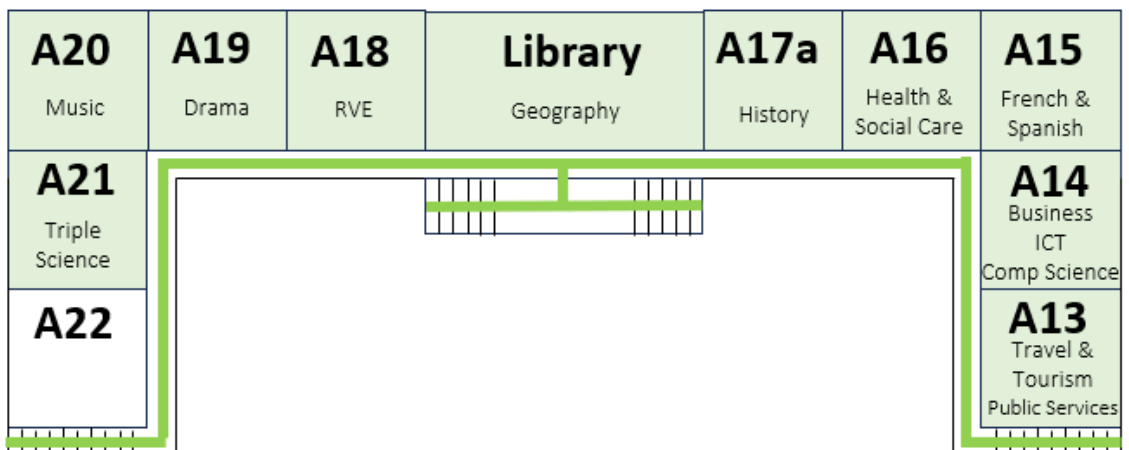
Options Evening Map



Ground Floor



First Floor





**Gowerton
School**

**Ysgol
Tregŵyr**

Cecil Road, Gowerton,
Swansea SA4 3DL

Tel:
01792 873461

Email:
Gowerton.School@swansea-edunet.gov.uk

Web:
GowertonSchool.com

Head Teacher
K. Lawlor

Head of Key Stage 3
W. Thomas

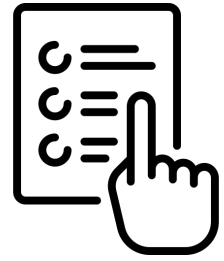
Head of Year 9
J. Lewis

Contents

Choosing your options	4
Vocational or GCSE	5
How to choose	6
Compulsory Subjects	7
Optional subjects	8
Course Information	9
Useful Links	10
Important Dates & Notes	11
How to contact us	12



Choosing your options



Introduction

This is an exciting stage in your school journey! Over the next few weeks, you'll be making some important decisions about the subjects you'll study in Years 10 and 11. These choices will shape your learning, help you build on your strengths and interests, and start preparing you for life after school — whether that's sixth form, college, an apprenticeship, or a future career. Take time to explore your options carefully, ask questions, and talk to your teachers, tutors, and family before making your final choices.



The Curriculum

The world around us is changing faster than ever, and our aim is to give you the best possible start for whatever path you choose after Gowerton. Our curriculum offers a wide range of high-quality qualifications across both academic and practical subjects, giving you the chance to explore your interests while keeping all future options open.

At Key Stage 4, we're excited to include subjects such as GCSE Photography, alongside BTEC Travel and Tourism, Health and Social Care, and lots more. Although you may not have studied these subjects before, they'll have plenty of opportunities over the upcoming term to gain an insight into the subject areas through open evenings, assemblies and through conversation with our subject leaders.

Choosing the right range of courses now is vitally important.

These are building blocks for the future and what you choose now will open or close opportunities at sixteen and beyond. In making your selection, think about:

- Areas of learning you enjoy
- Subjects which will help you with the career you have in mind

You will be supported at every stage by your Form Tutor, Curriculum Leaders and all staff. However, you also need to know that being successful at KS4 demands maturity, and that maturity begins now by making sure you choose your courses wisely. We very much look forward to supporting you with this process and the next exciting chapter in your education journey at Gowerton.



Vocational or GCSE

What is the difference?



Vocational



A vocational course is a qualification that focuses on practical, work-related learning. Instead of mainly studying theory and taking final exams like in a GCSE, you'll learn through real-life projects, hands-on activities, and continuous assessment. Vocational courses are designed to help you develop specific skills linked to certain jobs or industries, such as construction, business, or digital technology. They're a great choice if you enjoy learning by doing and want to see how your studies connect directly to the world of work.

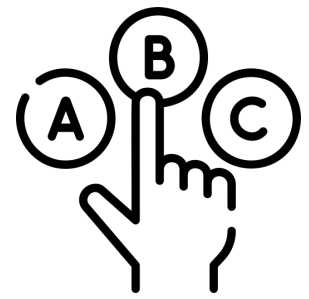
GCSE



A GCSE (General Certificate of Secondary Education) is a qualification that most pupils in Wales study in Years 10 and 11. GCSE courses cover a range of subjects, such as English, Welsh, maths, science, and many optional subjects you can choose yourself. They're mainly assessed through exams at the end of Year 11, although some subjects also include coursework or practical assessments. GCSEs help you build important knowledge and skills that prepare you for further education, training, or employment — and they're an important step towards college courses, apprenticeships, and future careers.



How to choose



When choosing your options, it's important to think carefully about your interests, strengths, and future goals. Pick subjects that you enjoy and feel confident in, because you will be studying them in depth for two years. Consider the subjects that might help you in the future, whether for further study, a career, or developing useful skills. It's also a good idea to keep a balance between subjects, including a mix of creative, practical, and academic options, so you have a broad education. Finally, don't choose a subject just because your friends are doing it or because it seems "easy"—choose what will challenge and inspire you to do your best.

Ask yourself...

Do I enjoy the subject?

Do you find the subject fun and interesting to learn about?

Am I good at it?

Do you have strengths or skills in this subject?

Does it link to my future career goals?

Will it be useful for future jobs or apprenticeships?

Will it help to further your education?

Do you need the subject for A-Levels, college or vocational courses?

Do I want a balanced set of subjects?

Do you want to cover different areas of learning? (Creative, academic, practical)

Do I want to challenge myself?

Do you want to push yourself academically or try something new?

Does it develop useful skills?

Like problem-solving, teamwork, creativity or communication?

Does it link to my hobbies or interests?

Is the subject related to what you enjoy outside of school?



Compulsory Subjects



Some subjects are compulsory at GCSE because they provide essential knowledge and skills that everyone needs for everyday life, further education, and future employment. Subjects like English, Cymraeg, Maths, and Science help you develop core abilities such as communication, problem-solving, and critical thinking — skills that are useful in almost every career. These subjects also ensure that all students have a strong foundation in literacy, numeracy, and scientific understanding, which are important for making informed decisions and participating fully in society. By studying these core subjects, you build the key skills needed to succeed both in school and beyond



English



Maths



Science



Cymraeg



Games

Non-exam



Challenge Certificate

Non-exam



RVE

Non-exam

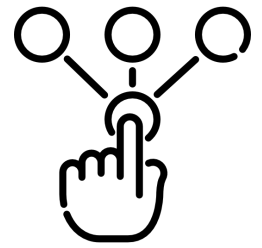


RSE

Non-exam



Optional Subjects



Alongside your compulsory subjects, you will then be able to choose a range of optional subjects to accompany them. Use the information in this booklet to help you choose wisely.

GCSE



Visual Arts



Computer Science



Design & Technology



Drama



Food & Nutrition



French



Geography



Health & Social Care



History



Music



Physical Education



Photography



Philosophy, Religion & Ethics



Triple Science



Spanish

Vocational



Business Studies



Engineering



Hospitality & Catering



ICT



Sport



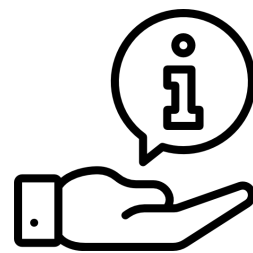
Public Services



Travel & Tourism



Course Information



Further information on all the courses that we offer can be found on our school website at www.GowertonSchool.com/courses or by accessing this QR Code



Talk to your teachers

Talking to your teachers about your GCSE subject choices is important because they know your strengths, learning style, and how you've progressed in their subjects. Teachers can give you honest advice about what each course involves, how it's assessed, and whether it suits your abilities and interests. They can also help you understand how different subjects connect to future study or career options. Having these conversations ensures that you make informed decisions based on accurate information rather than assumptions. Remember, your teachers want to help you succeed — so don't be afraid to ask questions and seek their guidance before making your final choices.

Pastoral Team

Head of Key Stage 3
W. Thomas

Head of Year 9
J. Lewis

Subject	Course Leader	Room
Art & Design, Photography, & Visual Arts	Mr D. Morgan	C12
Computer Science, ICT, & Business Studies	Mr J. Tavender	A10
Design & Technology & Engineering	Mr C. Thomas	B10
Drama	Mrs E. Roberts	C1
Food & Nutrition, Hospitality & Catering	Mrs S. Carvell	B1
French & Spanish	Mrs R. John	A15
Geography	Mr R. Hughes	C7
Health & Social Care	Mrs B. Lewis	C6
History	Mr D. Rew	C16
Music	Mrs K. Jones	C2
Philosophy, Religion & Ethics	Mrs N. Williams	C17
Physical Education & Sport	Mrs C. Jones	Sports Hall
Public Services	Miss C. Smitham	B2
Travel & Tourism	Mr G. Payne	B3



Useful Links



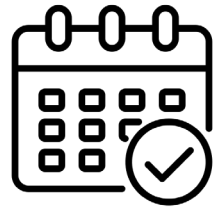
Gyrfa Cymru
Careers Wales



BITESIZE



Important Dates



Year 9 Academic Review 1 – November
Year 9 Initial Options Poll – Monday 24th November
Year 9 Academic Review 2 - March
Year 9 Parents' Evening - Tuesday 13th April
Year 9 Academic Review 3 – June
Year 9 Reports - End of Spring Term

Notes



A large, empty rounded rectangular box intended for students to write their notes.



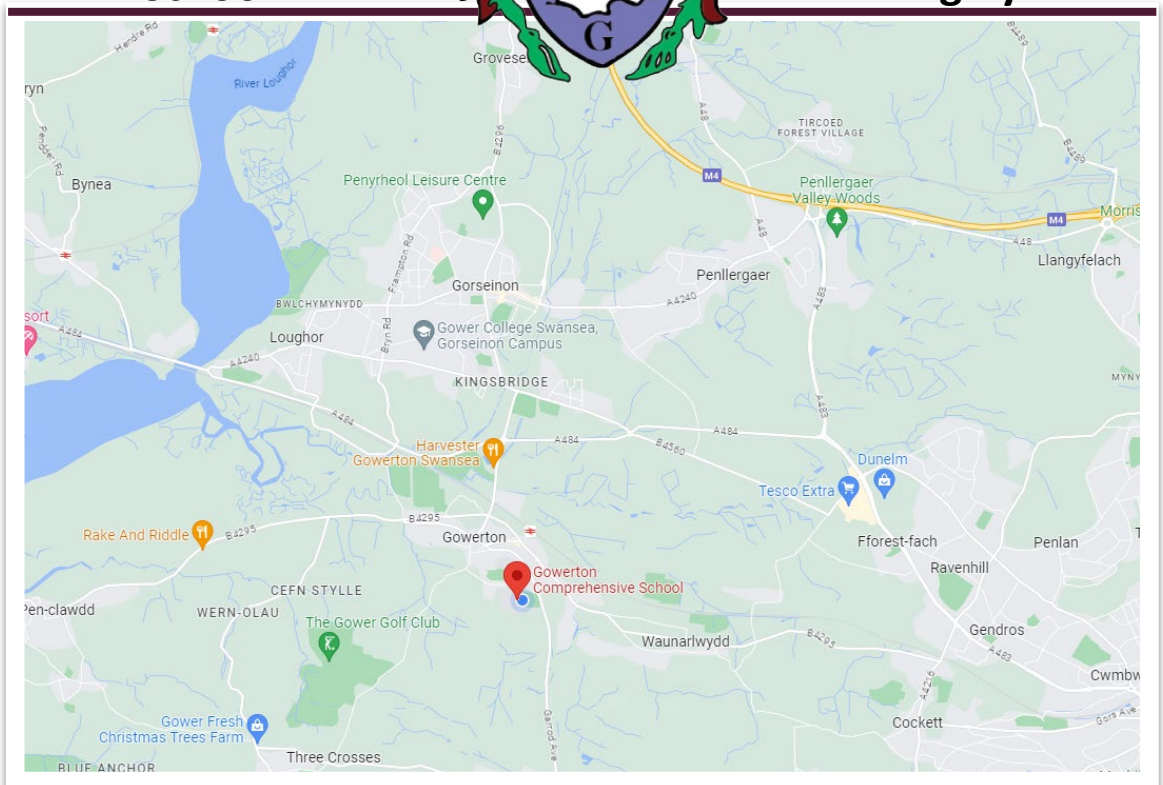
How to Contact us



**Gowerton
School**



**Ysgol
Tregŵyr**



Contact us

Gowerton School

Cecil Road

Gowerton

Swansea

SA4 3DL

TEL: (01792) 873461

FAX: (01792) 873986

gowerton.school@swansea-edunet.gov.uk

